

**SAMSUNG DYEING Co.,Ltd**  
**SAMSUNG TRADING Co.,Ltd**

---

# About SAMSUNG

## ◆ We are

- SAMSUNG DYEING Co.,Ltd  
(Dyeing & Coating) Since 1973
- SAMSUNG TRADING Co.,Ltd  
(Weaving) Since 1988

## ◆ Main Product

- 100% NYLON
- 100% POLYESTER
- MIXED FABRIC NYLON + POLYESTER

## ◆ Our products for

- BAG
- WORKWEAR
- MILITARY MATERIAL
- MOTORCYCLE WEAR
- CANOPY

## ◆ Contact point

### -Website

▪ [www.tgsstextile.com](http://www.tgsstextile.com)

### -Domestic Sales

▪ Manager : Hi Min Park  
▪ E-mail : [momomo1931@tgsstextile.com](mailto:momomo1931@tgsstextile.com)  
▪ TEL : +82.53.355.1421  
▪ FAX : +82.53.355.1423  
▪ MOBILE : +82.10.3807.1931

### -Abroad Sales

▪ Manager : Kora Park  
▪ E-mail : [kora29@tgsstextile.com](mailto:kora29@tgsstextile.com)  
▪ TEL : +82.53.355.1429  
▪ FAX : +82.53.355.1423  
▪ MOBILE : +82.10.9525.8700

# One Stop Production

WARPING



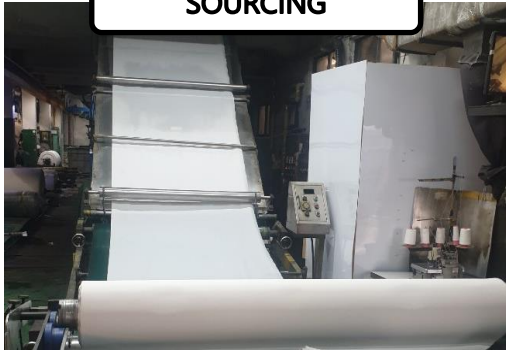
BEAMING



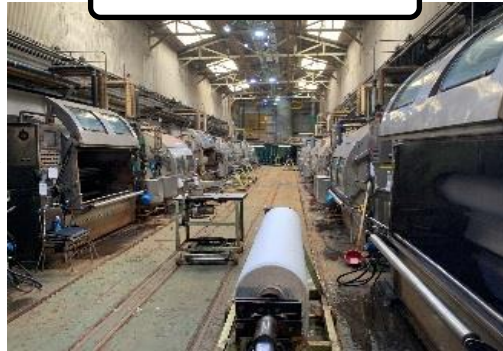
WEAVING



SOURCING



DYEING



FINSIHING



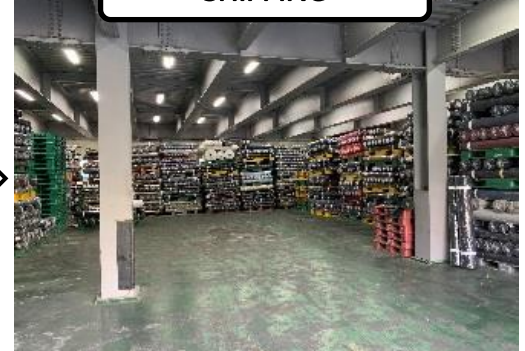
COATING



INSPECTION



SHIPPING

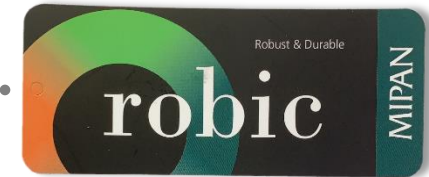


# What we could offer

## ◆ 100% NYLON

- High Tenacity
  - Cordura
  - robic
  - robic-air
- Pattern
- Recycle fabric

Durable. Versatile. Reliable.  
**CORDURA**  
BRAND  
F A B R I C



## ◆ 100% Polyester

- Pattern
- Recycle fabric



## ◆ Mixed fabric

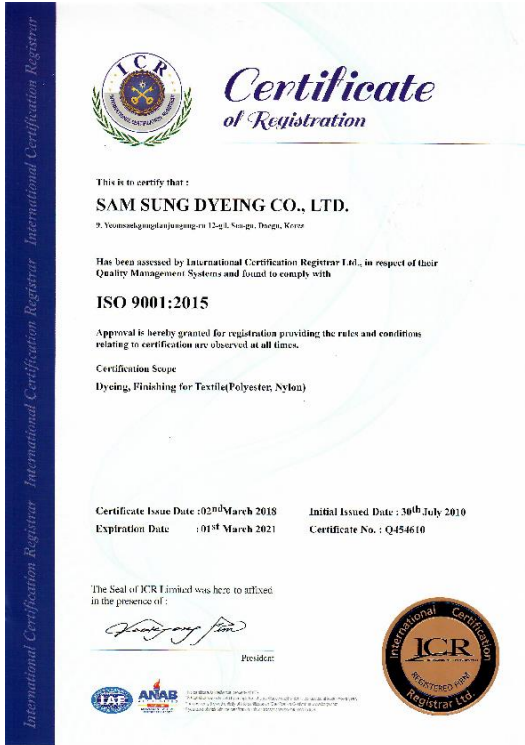
- Two way span
- Poly + Nylon



# Business with...



# Certification



**ISO 9001**  
QUALITY MANAGEMENT



**INNO-BIZ**  
INNOVATION & BUSINESS



**OEKO-TEX STANDARD 100**  
ECO - FRIENDLY

# Item List

NO	ITEM
<b>TWILL FABRIC</b>	
1	N/100/210 HD TWILL
2	N/330D HD TWILL
3	N/330D FD HD TWILL
4	N/4284D TWILL
5	N/840D TM TWILL
6	POLY CABERDINE
7	POLY 300D 2/2 TWILL
<b>RIP STOP FABRIC</b>	
8	N/210D SD BABY R/S(2×2)
9	N/210D BRT DOUBLE DIA
10	N/330D DOUBLE R/S
11	N/420D BRT M/DIA R/S
12	N/P 420D DIA R/S
<b>NYLON PLAIN FABRIC</b>	
13	N/210D SD
14	N/210D SD STRIPE
15	N/210D 3 LINE R/S
16	N/210/1000D GROGRAN
17	N/330D GUCCI
18	N/420D BRT
19	N/420D 3 LINE R/S
20	N/525D GUCCI
21	N/630D SD TM MATT II
22	N/840D TM OXLAN
23	N/840D BRT
24	N/840D TM
25	N/84T42
26	N/840D TM HALF
27	N/1680D TM
28	N/2520/2520D (3:3)TM

NO	ITEM
<b>POLY PLAIN FABRIC</b>	
29	POLY 450D HD
30	POLY 600D
31	POLY 900D
32	POLY 1200D
33	POLY 1800D
<b>NYLON DOBBY FABRIC</b>	
34	N/210D HONEYCOMB
35	N/330D HONEYCOMB
36	N/330D CAP DOBBY
37	N/330D SMALL DIA
38	N/330D EMBO DOBBY
39	N/420D NAIL HEAD
40	N/420D BLOCK DOBBY
41	N/420D SOFT DOBBY
42	N/840D DOBBY MATT I
43	N/8442D WIDE DOBBY
44	N/84T NAIL
45	N/525 ART
<b>RECYCLE YARN FABRIC</b>	
46	N/regen 210D
47	N/regen 420D
48	N/regen 420D HD
49	N/regen 420D CHECK DOBBY
50	N/regen 630D
51	N/regen 1050D
52	P/regen 300D
53	P/regen 450D
54	P/regen 600D

NO	ITEM
<b>ROBIC YARN FABRIC</b>	
55	N/robic 100D
56	N/robic 100/100D TWILL
57	N/robic 100/210D DOUBLE R/S
58	N/robic 100/210D HONEYCOMB
59	N/robic 100/210D TWILL
60	N/robic 210D BRT
61	N/robic 210D BRT HD
62	N/robic 210D DOUBLE DIA
63	N/robic 210D SMALL DIA
64	N/robic 210D TWILL L
65	N/robic 210D BABY R/S
66	N/robic 6WS-210
67	N/robic PRADA TWILL
68	N/robic 330D OXFORD
69	N/robic 420D BRT
70	N/robic 420D BRT HD
71	N/robic 420D VELOCITY
72	N/robic 840D BRT
73	N/robic MANDARINE
74	N/robic 330D ATY
75	N/robic 500D ATY
76	N/robic 500D ATY R/S
77	N/robic 600D ATY
78	N/robic 750D ATY
79	N/robic 1000D ATY
80	N/robic 1260D
81	N/robic 1680D TM
82	N/robic 1680D II TM
83	N/robic 2520/2520D TM

NO	ITEM
<b>ROBIC-AIR YARN FABRIC</b>	
84	N/robic-air 420D
85	N/robic-air 840D TM TWILL
86	N/robic-air 1260D TM
87	N/robic-air 1680D TM
<b>ATY FABRIC</b>	
88	robic 500D ATY
89	KODURA 500D ATY
90	CORDURA 500D ATY
91	robic 1000D ATY
92	KODURA 1000D ATY
93	CORDURA 1000D ATY
<b>TWO TONE POLYESTER</b>	
94	POLY 600D CATION
95	POLY 600D CATION
96	POLY 600D CATION
97	POLY 600D CATION
98	POLY 600D CATION
99	POLY 1200D CATION
100	POLY 1800D CATION
<b>COTTON HANDFEEL POLYESTER</b>	
101	P/COTNA 320D
102	P/COTNA 640D
103	P/COTNA 960D
104	P/COTNA 1280D
105	P/COTNA 1600D
<b>WASHABLE FABRIC</b>	
106	N/420D B/S
107	N/420D B/S
108	N/420D B/S